



4:1, 7,8:1, 10,3:1	2-stufig	(alle Räder Stahl)	4:1, 7,8:1, 10,3:1	2 Stage	(all wheels steel)
15,2:1, 19:1, 25:1, 33:1	3-stufig	1. Stufe Hgw.-Rad (auch Stahl möglich)	15,2:1, 19:1, 25:1, 33:1	3 Stage	1. Stage fiber (also steel available)
41,5:1, 51,5:1, 61:1, 81:1, 107:1	4-stufig		41,5:1, 51,5:1, 61:1, 81:1, 107:1	4 Stage	
149:1, 197:1, 262:1, 347:1	5-stufig		149:1, 197:1, 262:1, 347:1	5 Stage	

Maximal zulässiges Drehmoment 800 Ncm

Maximum Output Torque 800 Ncm

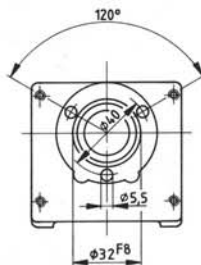
Drehrichtung von Abtriebs- und Motorwelle:
bei 2- u. 4-stufig gleichläufig
bei 3- u. 5-stufig gegenläufig

Input-Output Rotation is the same for 2 & 4 Stage Gearboxes.
Input-Output Rotation is reversed for 3 & 5 Stage Gearboxes.

Belastbarkeit der Abtriebswelle
radial: 250 N (Angriff Mitte frei vorstehendem Wellenende)
axial: 120 N

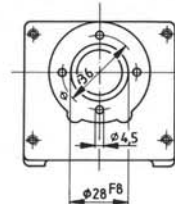
Maximum radial load 250 N
(at center of output shaft extension)
Maximum axial load 120 N

Diagramme über Wirkungsgrad s. nächste Seite / See following page for efficiency curves



Flansch Form A / Input Flange Type A

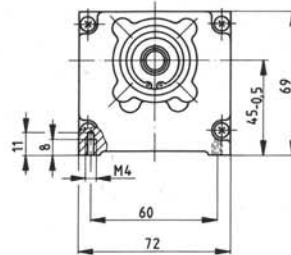
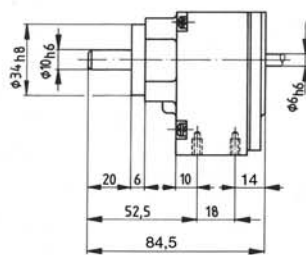
zum Anbau an / Used with:
KM 80, KM 87,
DM/WKM 80, ODM/OWK 80, DM/WKM 90,
ODM/OWK 90,
ED1/EW1 70, ED2/EW2 70, ED1/EW1 80,
ED2/EW2 80, ED1/EW1 90, ED2/EW2 90,
PM1 48, PM1 60, PM1 72, PM1 85
IG / BG 65 / 80 / 90



Flansch Form B / Input Flange Type B

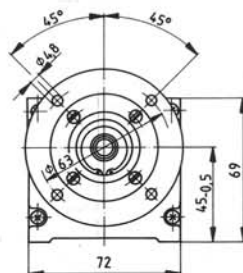
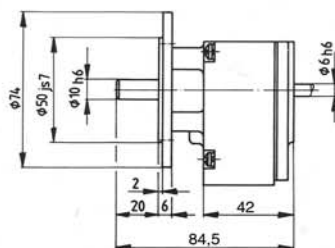
zum Anbau an/Used with:
KM 70, DM/WKM 70, ODM/OWK 70,
EM 70, EM 80, EM 87, EM 94, MG 2-65
BGK 48

FUSSAUSFÜHRUNG Bauform / MOUNTING TYPE B 3



	Gewicht / Weight kg
2-stufig 2 Stage	0,75
3-stufig 3 Stage	0,78
4-stufig 4 Stage	0,81
5-stufig 5 Stage	0,84

FLANSCHAUSFÜHRUNG Bauform / MOUNTING TYPE B 5

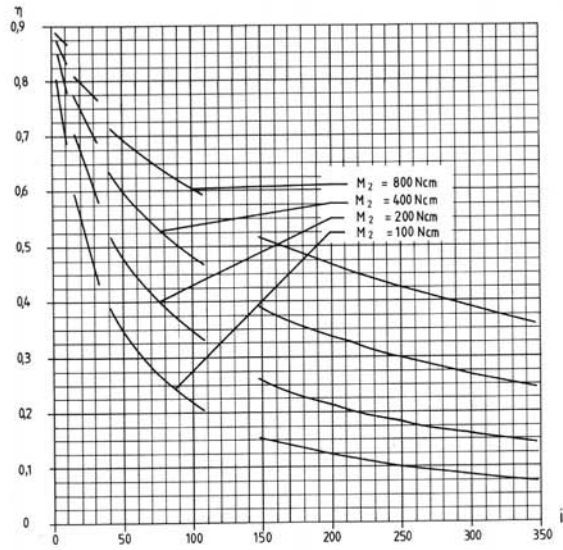


	Gewicht / Weight kg
2-stufig 2 Stage	0,80
3-stufig 3 Stage	0,83
4-stufig 4 Stage	0,86
5-stufig 5 Stage	0,89

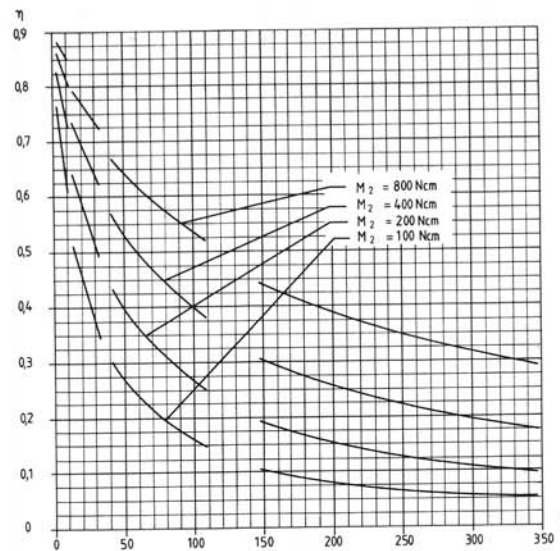
Maße ohne Toleranzangabe unverbindlich / Dimensions are in mm and are for reference only.



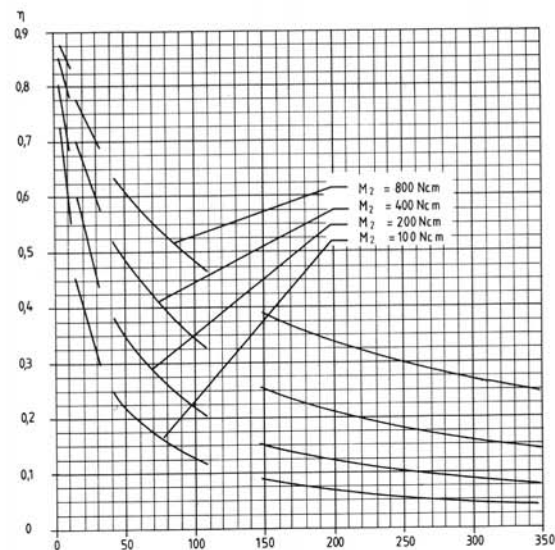
bei $n_{Mot} = 1400 \text{ min}^{-1}$
 1400 RPM Input



bei $n_{Mot} = 2800 \text{ min}^{-1}$
 2800 RPM Input



bei $n_{Mot} = 4000 \text{ min}^{-1}$
 4000 RPM Input





1,24:1, 1,6:1, 2:1, 2,5:1,
3,2:1, 4:1, 5:1, 6:1,
8:1, 10:1, 12:1, 16:1
19:1, 25:1, 31:1, 39:1,
50:1, 62:1
77:1, 100:1, 124:1, 157:1,
198:1, 249:1
309:1, 398:1, 498:1,
628:1, 793:1, 996:1

2-stufig (alle Räder Stahl)

3-stufig

4-stufig

5-stufig

1. Stufe Hgw.-Rad
(auch Stahl möglich)

1,24:1, 1,6:1, 2:1, 2,5:1,
3,2:1, 4:1, 5:1, 6:1,
8:1, 10:1, 12:1, 16:1
19:1, 25:1, 31:1, 39:1,
50:1, 62:1
77:1, 100:1, 124:1, 157:1,
198:1, 249:1
309:1, 398:1, 498:1,
628:1, 793:1, 996:1

2 Stage

3 Stage

4 Stage

5-Stage

(all wheels steel)

1. stage fiber
(also steel available)

Maximal zulässiges Drehmoment 1500 Ncm

Drehrichtung von Abtriebs- und Motorwelle:
bei 2- u. 4-stufig gleichläufig
bei 3- u. 5-stufig gegenläufig

Belastbarkeit der Abtriebswelle
radial: 300 N (Angriff Mitte frei vorstehendem Wellenende)
axial: 140 N

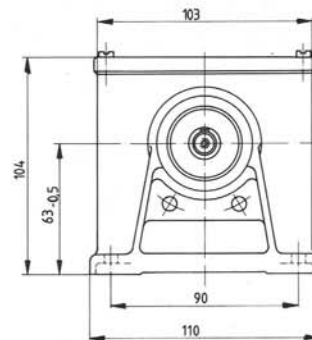
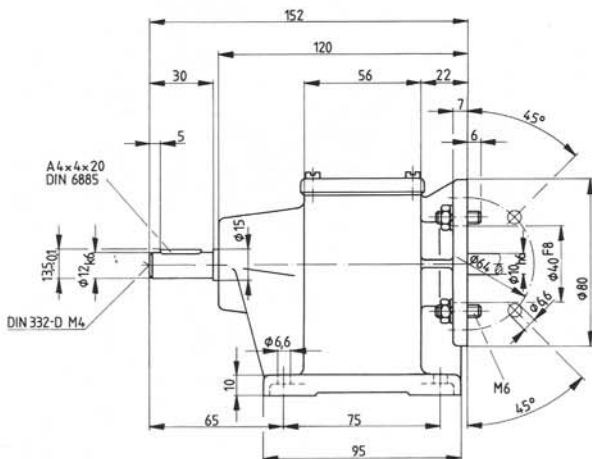
Maximum Output Torque 1500 Ncm

Input-Output Rotation is the same for 2 & 4 Stage Gearboxes.
Input-Output Rotation is reversed for 3 & 5 Stage Gearboxes.

Maximum radial load 300 N
(at center of output shaft extension)
Maximum axial load 140 N

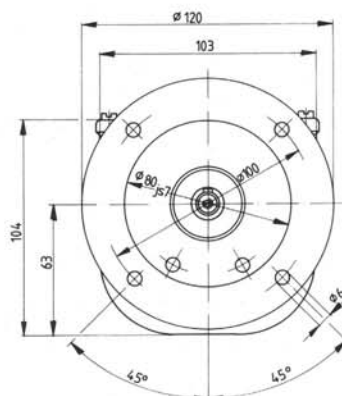
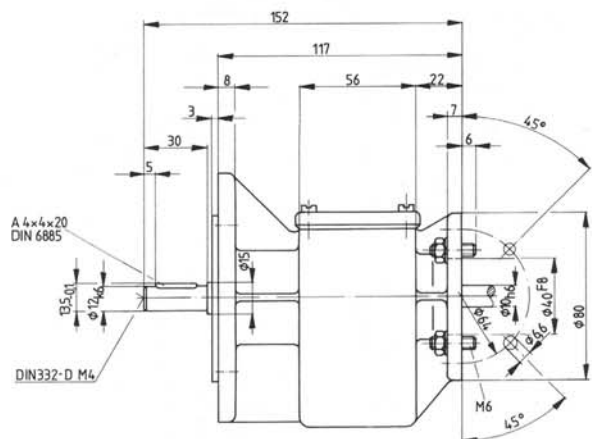
Diagramme über Wirkungsgrad s. nächste Seite / See following page for efficiency curves

FUSSAUSFÜHRUNG Bauform / MOUNTING TYPE B 3



	Gewicht / Weight kg
2-stufig 2 Stage	1,7
3-stufig 3 Stage	1,7
4-stufig 4 Stage	1,8
5-stufig 5 Stage	1,9

FLANSHAUSFÜHRUNG Bauform / MOUNTING TYPE B 5

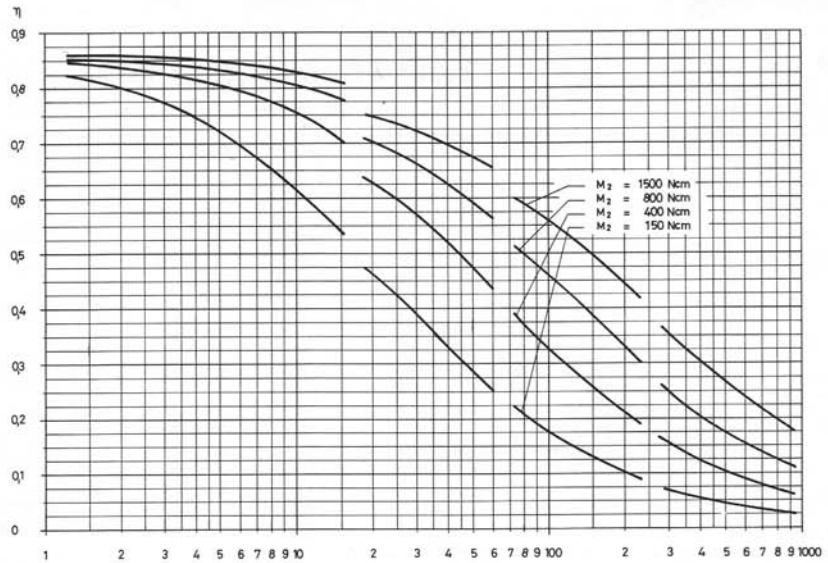


	Gewicht / Weight kg
2-stufig 2 Stage	1,85
3-stufig 3 Stage	1,85
4-stufig 4 Stage	1,95
5-stufig 5 Stage	2,05

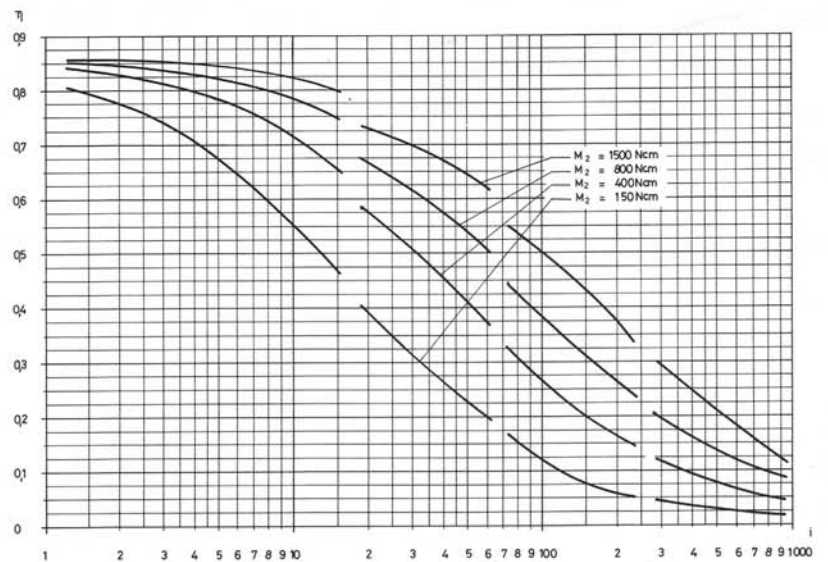
Maße ohne Toleranzangabe unverbindlich / Dimensions are in mm and are for reference only.



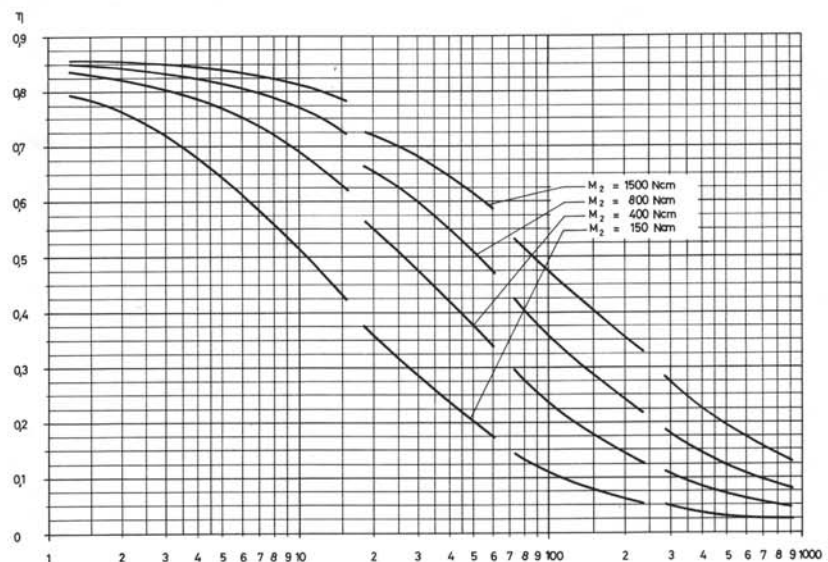
bei $n_{Mot} = 1400 \text{ min}^{-1}$
1400 RPM Input



bei $n_{Mot} = 2800 \text{ min}^{-1}$
2800 RPM Input

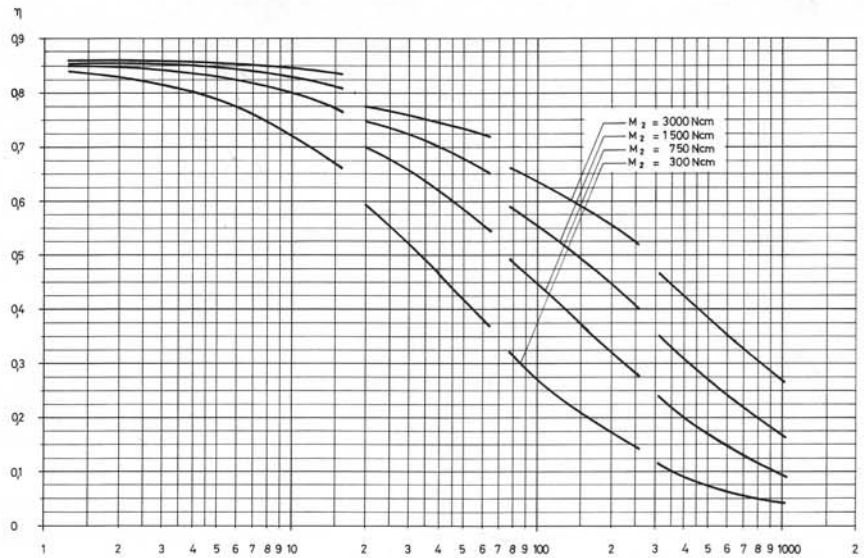


bei $n_{Mot} = 4000 \text{ min}^{-1}$
4000 RPM Input

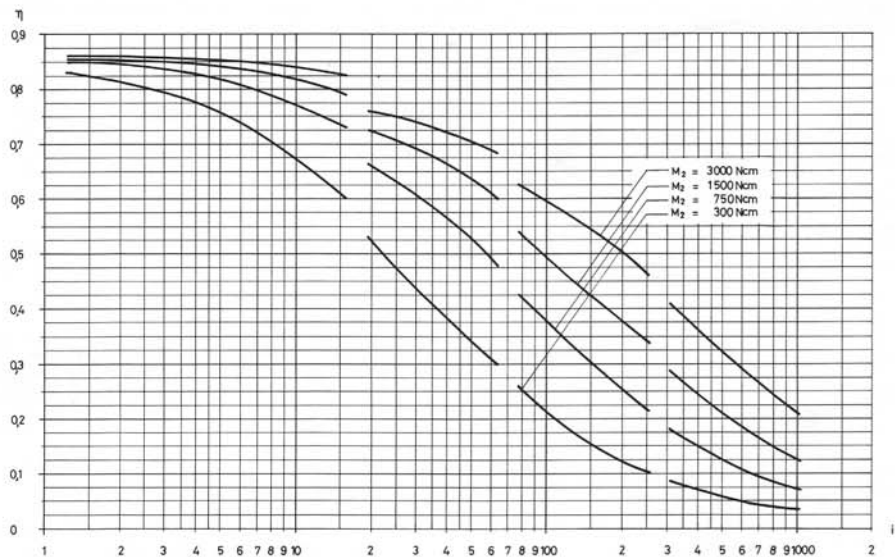




bei $n_{Mot} = 1400 \text{ min}^{-1}$
1400 RPM Input



bei $n_{Mot} = 2800 \text{ min}^{-1}$
2800 RPM Input



bei $n_{Mot} = 4000 \text{ min}^{-1}$
4000 RPM Input

